

New!

MiniSprint® ...

... is now really mini



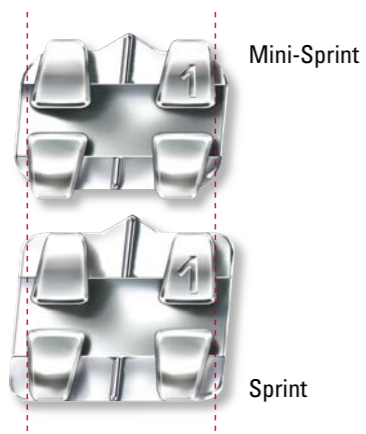
Mini-Sprint® Brackets

Mini-Sprint® Brackets

– the quality brackets for your practice.

Ni-Free**

The new Mini Sprint brackets provide the same uncompromised rotational control like the Sprint brackets.



Mini-Sprint brackets are the aesthetically more pleasing alternative to the standard Sprint brackets.

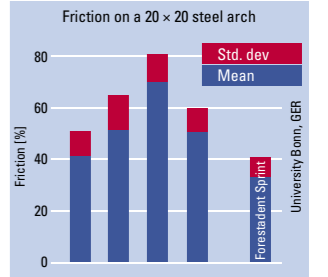
Up to now Mini-Sprint brackets have only been available for upper centrals and laterals.

Now Mini Sprint is available from 5 to 5 in both arches.

The new Mini Sprint bracket system provides an ideal mesial-distal dimension for uncompromised rotational control.

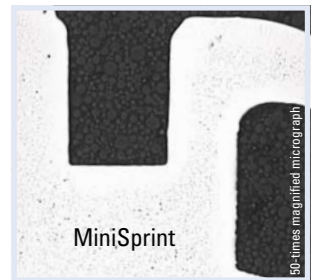
Faster Treatment.

Round edges in the slot and super smooth surfaces significantly reduce friction and shorten treatment time. Compared to milled brackets Mini-Sprint and Sprint brackets create up to 45% less friction.*



High tech materials for un-compromised product performance. Superior corrosion resistance and Ni-FREE raw material makes Mini-Sprint brackets suitable for nickel allergy patients.**

Material density eliminates tie wing breakages and bracket distortion.



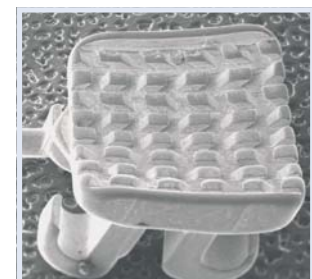
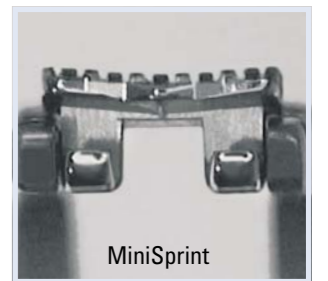
Perfect fit to tooth contour without compromising bracket geometry and handling.

Mini-Sprint brackets feature the same deep tie wings as the standard Sprint brackets for easy and secure double ligation.

Mini-Sprint brackets are available in Roth system* .018" and .022" with or without hooks for canines and bicuspids.**

Unrivalled bond strength.

The unique 3 dimensional bonding base on the Mini-Sprint bracket base increases bond strength by up to 30% compared to conventional mesh pads. When debonding the bonding base retains more adhesive and makes adhesive removal easier and faster.



*PHD-Thesis: Dr. Talebnasab, University Bonn 2003. **Prof. Dr. H. F. Kappert, University of Freiburg, dtd. March 8, 1999. ***The FORESTADENT version of these prescriptions are not claimed to be a duplication of any other, nor does Forestadent imply that it is endorsed in any way by the doctor.



Slot .018"

Roth-System

MAXILLARY

	788-0513	788-0513	788-0313	788-0203	788-0103	787-0103	787-0203	787-0313	787-0513	787-0513
	788-0503	788-0503	788-0303	–	–	–	–	787-0303	787-0503	787-0503
Mini-Sprint 	Torque	-7°	-7°	-2°	+8°	+12°	+12°	+8°	-2°	-7°
	Angulation	0°	0°	+11°	+9°	+5°	+5°	+9°	+11°	0°
	In/Out	0,9	0,9	0,9	1,5	1,0	1,0	1,5	0,9	0,9
	Rotation	2° distal	2° distal	4° mesial	–	–	–	–	4° mesial	2° distal
	788-1613	788-1513	788-1413	787-1203	787-1203	787-1203	787-1203	787-1413	787-1513	787-1613
	788-1603	788-1503	788-1403	–	–	–	–	787-1403	787-1503	787-1603

MANDIBULAR

Cases	1	5	10	20	50
Brackets	20	100	200	400	1000
	706-1001	706-1002	706-1003	706-1004	706-1005
3	706-1006	706-1007	706-1008	706-1009	706-1010
3-5	706-1011	706-1012	706-1013	706-1014	706-1015

Slot .022"

Roth-System

MAXILLARY

	788-0511	788-0511	788-0311	788-0201	788-0101	787-0101	787-0201	787-0311	787-0511	787-0511
	788-0501	788-0501	788-0301	–	–	–	–	787-0301	787-0501	787-0501
Mini-Sprint 	Torque	-7°	-7°	-2°	+8°	+12°	+12°	+8°	-2°	-7°
	Angulation	0°	0°	+11°	+9°	+5°	+5°	+9°	+11°	0°
	In/Out	0,9	0,9	0,9	1,5	1,0	1,0	1,5	0,9	0,9
	Rotation	2° distal	2° distal	4° mesial	–	–	–	–	4° mesial	2° distal
	788-1611	788-1511	788-1411	787-1201	787-1201	787-1201	787-1201	787-1411	787-1511	787-1611
	788-1601	788-1501	788-1401	–	–	–	–	787-1401	787-1501	787-1601

MANDIBULAR

Cases	1	5	10	20	50
Brackets	20	100	200	400	1000
	706-1016	706-1017	706-1018	706-1019	706-1020
3	706-1021	706-1022	706-1023	706-1024	706-1025
3-5	706-1026	706-1027	706-1028	706-1029	706-1030